

REFINITIV MESSENGER COMPLIANCE

Systematic protection from unauthorized multi-firm chats

Exclusively available to Refinitiv® Messenger, our **Bilateral Enforcement** control systematically prevents users from participating in multi-firm chat rooms – even those owned by other organizations.

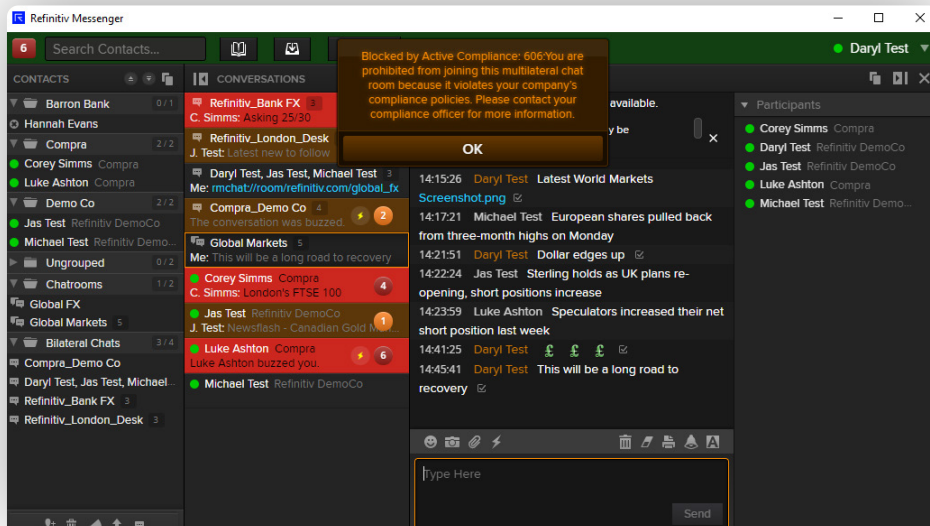
This control uses the same technology that powers our patented **Bilateral Chat** function. It is configured via our free RMC Policy Management service and delivers numerous benefits to protect your users and your firm's reputation.

Key features

- Bilateral Enforcement blocks users from participating in multilateral chat rooms – created by your firm or counterparty organizations
- Ability to BLOCK all – or some – users from joining multi-firm chats
- Selectively ALLOW multilateral chat room access for a subset of authorized users
- In-product alerts to inform users as to why they are unable to join a room
- Real-time compliance alerts when attempts are made by a blocked user to join a multilateral chat room
- Policy refresh frequency increased to three times daily to allow even faster enforcement of new policies

Once Bilateral Enforcement is configured

BLOCKED users	ALLOWED users
<ul style="list-style-type: none">• Are unable to join any new or existing rooms if there are more than two firms participating – including rooms managed by other organizations• Will be temporarily disconnected from their chat rooms; the Bilateral Enforcement control is applied when they attempt to rejoin the conversation• See an in-product message to inform them about what has happened	<ul style="list-style-type: none">• Continue to participate in multilateral chat rooms they are entitled to join



BLOCKED users will see an in-product message to inform them that Bilateral Enforcement has been applied.

To complement the new control, the Chat Room Organizer portal informs administrators when any membership edits may unwittingly transform a chat room into a multilateral firm chat room and cause the auto-ejection of some users.

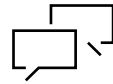
Number of firms permitted to join the chat.

Warning message shown to advise that your intended membership changes will transform a bilateral chat room into a multilateral one. User given the option to proceed or cancel the change.

After application of membership changes, the room is transformed into a multi-firm chat.

We do the work, so you don't have to

Compliance is at the heart of Refinitiv Messenger. We offer a number of other best-in-class active compliance solutions for FREE to help reduce your business communications risk:



Patented Bilateral Chat

Control external multilateral communications by ensuring all conversations never have participants from more than two companies.



Ethical Boundaries

Assign users to groups and create information boundaries ("ethical walls") between group members to block all communications between 1:1, chat groups, bilateral chats and file sharing.



Keyword Controls

Control the conversations by building lists of prohibited keywords or phrases, e.g., profanities or gifts and entertainment policies.



Violation Attempt Alerting

Receive real-time email alerts of any attempts made by users to violate any of your firm's rules.



Domain-Based Enforcement

Easily control communications with all users whose identities are from specific domains.



Customized Policy Messages

Build in customized policy description messages.



Custom Disclaimers

Implement customized firm-wide or group-specific disclaimers that will be delivered to counterparties whenever your users initiate or first respond to an inbound message.

Visit refinitiv.com/em-compliance



REFINITIV[®]
DATA IS JUST THE BEGINNING[®]